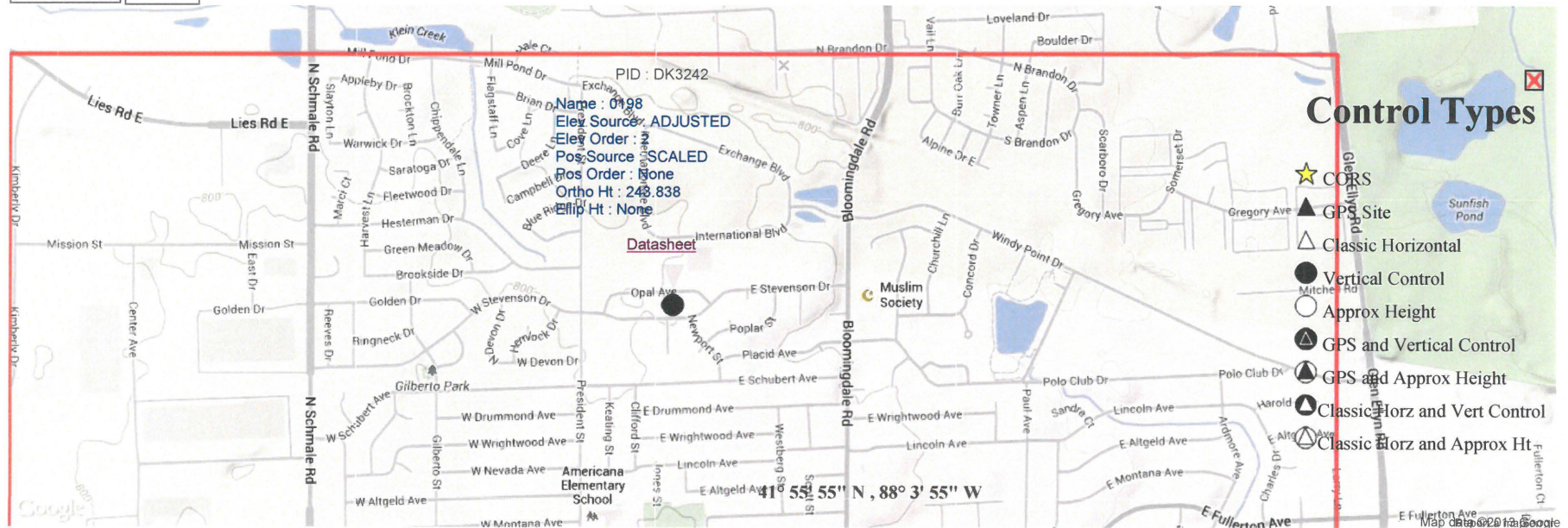


National Geodetic Survey Data Explorer

- [NGS Home](#)
- [About NGS](#)
- [Data & Imagery](#)
- [Tools](#)
- [Surveys](#)
- [Science & Education](#)

 Search


end symbology div-->

- [Getting Started](#)
- [Symbology](#)
- [Go To Location](#)
- [Who To Call](#)
- [FAQ](#)

Horizontal

- ☆ CORS

The NGS Data Sheet

See file [dsdata.txt](#) for more information about the datasheet.

```

PROGRAM = datasheet95, VERSION = 8.4
1      National Geodetic Survey,  Retrieval Date = DECEMBER 12, 2013
DK3242 *****
DK3242 DESIGNATION - 0198
DK3242 PID - DK3242
DK3242 STATE/COUNTY- IL/DU PAGE
DK3242 COUNTRY - US
DK3242 USGS QUAD - LOMBARD (1993)
DK3242
DK3242 *CURRENT SURVEY CONTROL
DK3242
DK3242* NAD 83(1986) POSITION- 41 55 25. (N) 088 05 16. (W) SCALED
DK3242* NAVD 88 ORTHO HEIGHT - 243.838 (meters) 799.99 (feet) ADJUSTED
DK3242
DK3242 GEOID HEIGHT - -33.38 (meters) GEOID12A
DK3242 DYNAMIC HEIGHT - 243.753 (meters) 799.71 (feet) COMP
DK3242 MODELED GRAVITY - 980,266.8 (mgal) NAVD 88
DK3242
DK3242 VERT ORDER - SECOND CLASS I
DK3242
DK3242.The horizontal coordinates were scaled from a topographic map and have
DK3242.an estimated accuracy of +/- 6 seconds.
DK3242.
DK3242.The orthometric height was determined by differential leveling and
DK3242.adjusted by the NATIONAL GEODETIC SURVEY
DK3242.in May 2008.
DK3242
DK3242.No vertical observational check was made to the station.
DK3242
DK3242.The dynamic height is computed by dividing the NAVD 88
DK3242.geopotential number by the normal gravity value computed on the
DK3242.Geodetic Reference System of 1980 (GRS 80) ellipsoid at 45
DK3242.degrees latitude (g = 980.6199 gals.).
DK3242
DK3242.The modeled gravity was interpolated from observed gravity values.
DK3242
DK3242; North East Units Estimated Accuracy
DK3242;SPC IL E - 583,650. 320,370. MT (+/- 180 meters Scaled)
DK3242
DK3242 SUPERSEDED SURVEY CONTROL
DK3242
DK3242.No superseded survey control is available for this station.
DK3242
DK3242_U.S. NATIONAL GRID SPATIAL ADDRESS: 16TDM098418(NAD 83)
DK3242
DK3242_MARKER: DD = SURVEY DISK
DK3242_SETTING: 31 = SET IN A PAVEMENT SUCH AS STREET, SIDEWALK, CURB, ETC.
DK3242_SP_SET: LIGHT POLE BASE
DK3242_STAMPING: 0198 2006
DK3242_MARK LOGO: IL-043
DK3242_MAGNETIC: N = NO MAGNETIC MATERIAL

```

DK3242_STABILITY: D = MARK OF QUESTIONABLE OR UNKNOWN STABILITY
DK3242_SATELLITE: THE SITE LOCATION WAS REPORTED AS NOT SUITABLE FOR
DK3242+SATELLITE: SATELLITE OBSERVATIONS - August 26, 2006

DK3242

DK3242	HISTORY	- Date	Condition	Report By
DK3242	HISTORY	- 20060826	MONUMENTED	PATRIC

DK3242

DK3242

STATION DESCRIPTION

DK3242

DK3242'DESCRIBED BY PATRICK ENGINEERING INCORPORATED 2006

DK3242'THE STATION IS GLENDALE HEIGHTS, IL.

DK3242'

DK3242'TO REACH THE STATION FROM THE INTERSECTION OF ARMY TRAIL ROAD AND

DK3242'BLOOMINGDALE ROAD, GO SOUTH ON BLOOMINGDALE ROAD FOR.9 MI (1.4 KM) TO

DK3242'STEVENSON DRIVE. GO WEST ALONG STEVENSON DRIVE FOR.35 MI (0.6 KM) TO

DK3242'THE STATION ON THE RIGHT. THE STATION IS LOCATED AT THE NORTH SIDE OF

DK3242'THE T INTERSECTION OF STEVENSON DRIVE AND NEWPORT STREET.

DK3242'

DK3242'THE STATION IS 18.0 FT (5.5 M) NORTH OF THE INTERSECTION OF STEVENSON

DK3242'DRIVE AND 3.0 FT (0.9 M) WEST OF THE EXTENDED CENTERLINE OF NEWPORT

DK3242'STREET. THE MONUMENT IS A 3.5 INCH (9 CM) BRASS DISK ON THE SOUTH

DK3242'SIDE OF A 2.0 FT (0.6 M) DIAMETER CONCRETE LIGHT POLE BASE. THE

DK3242'MONUMENT IS 0.5 FT (0.2 M) ABOVE ROAD GRADE.

*** retrieval complete.

Elapsed Time = 00:00:01



DuPage County, Illinois 2006 Geodetic Survey Monument



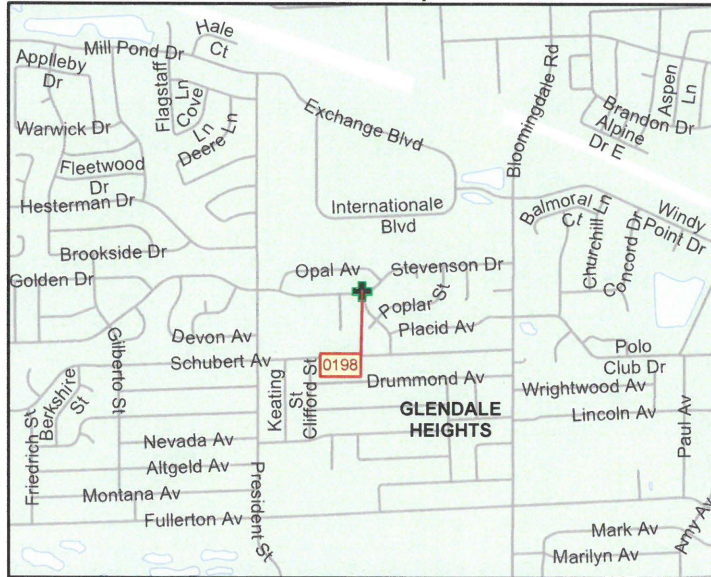
Benchmark:	0198	Station Elevation:	799.99 Ft
PID:	DK3242	Date Established:	Mar-2006
County:	DuPage	Date Last Checked:	
Township:	Bloomington	Vertical Datum:	NAVD 88
Northing:	1914867	Order of Accuracy:	2nd Order - Class 1
Easting:	1051254	NGS Horizontal Accuracy:	Not Applicable

Caution: Northing and easting information is given in NAD 83 Illinois State Plane East and are for location reference only. Actual northing and easting information may differ.

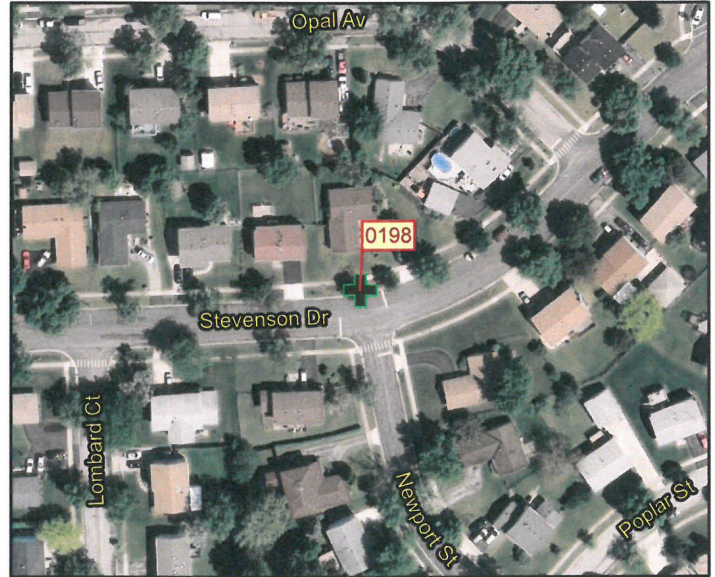
Description:

Station is located at the north side of the "T" intersection of Stevenson Drive and Newport Street. Station is 18.0 ft north of the intersection of Stevenson Drive and 3.0 ft west of the extended centerline of Newport Street. Monument is a 3.5 inch brass disk on the south side of a 2.0 ft diameter concrete light pole base. Monument is 0.5 ft above road grade.

Locator Map



Aerial Map



Benchmark Close Up



Benchmark Locator Reference



**Caution: Use of this information should be subject to strict professional surveying principles and verification checks. Monuments may have been disturbed since the data was verified by DuPage County, which may affect the validity and accuracy of the data herein provided. This data may from time-to-time be updated. Please refer to the DuPage County website for updates on benchmarks. To report the disturbance or destruction of a benchmark, please contact the DuPage County Information Technology Department, GIS Division.
Date of photography: Spring 2010, Spring 2011 where available.**

DuPage County
GIS Division
421 N County Farm Road
Wheaton, IL 60187
Phone: 630-407-5000
www.dupageco.org/gis/

Legend

-  Geodetic Survey Monument
-  Pavement Center Line

