

NOTICE TO BIDDERS

The Village of Glendale Heights will receive sealed bids for Public Works Trench Drain Replacement for the Village of Glendale Heights, IL.

Bids are due and will be opened and read aloud on the September 21, 2021 at 11:00 A.M., Local Time, at the Village Hall, 300 Civic Center Plaza, Floyd Brown Meeting Room, Glendale Heights, IL 60139.

A MANDATORY Pre-Bid will be conducted on September 13, 2021 at 10:00 am at the Public Works Garage, located at 1615 Glen Ellyn Road, Glendale Heights, IL 60139. Meeting spot will be located in the front of the building. Masks are required.

Each bid shall be accompanied by a Bid Security. A bid security shall be a Bid bond, certified check, bank draft, or cashier's check in an amount of 5% of the contract total.

The successful bidder shall furnish a satisfactory performance bond within ten (10) business days after notification of the bid award in an amount not to exceed one hundred percent (100%) of the total bid price. The bond must be with a bonding company acceptable to the Village of Glendale Heights. Failure to furnish a satisfactory performance and payment bond within the period specified shall be cause for rejection of the bid.

The Bidding documents and Specifications for said services may be obtained and reviewed at the Office of the Purchasing Division, Finance Department 300 Civic Center Plaza, Glendale Heights, during regular business hours.

The general prevailing rate of wages in DuPage County for each craft or type of worker or mechanic needed to execute the contract or perform the work, also the general prevailing rate for legal holiday and overtime work, as ascertained by the United States Department of Labor, shall be paid for each craft or type of worker needed to execute the contract or to perform the work.

Bids shall only be withdrawn with written consent of the President and Board of Trustees of Glendale Heights. The Village of Glendale Heights reserves the right to reject any or all bids and to waive any informality in the bidding.

Addendum #1

Public Works Trench Drain Replacement

New Bid Opening Date: **September 28, 2021**

To All Prospective Bidders:

Addendum #1 consists of the following Questions and Answers which clarify and provide supplemental information for the above captioned Bid. In addition, we have provided the Manufacturer Specification sheet for additional install information.

1. Question: What is the existing PCC pavement thickness of the shop floor?
Answer: Thickness is 5" – 8" per the plans.
2. Question: What type of pipe is the oil line?
Answer: PVC as indicated on plans.
3. Question: Where is the proposed water supply piping shown? There's nothing shown on drawing for water supply.
Answer: Not in the scope of work.
4. Question: Where are the equipment cabinets shown and please provide specification?
Answer: Not in the scope of work.
5. Questions: Does the existing vent pipe get saw cut, removed and new concrete poured back in for restoration? Or are we abandoning existing vent in place? **Abandon or remove per Illinois code.** Are we reusing existing roof vent location to run new vent pipe through existing hole penetrations? **Yes, in the locations indicated on the drawings.** What does the demolition of the old vent piping entail? **Remove, in it's entirety.** Are we supposed to route the new vent piping to the existing roof penetration locations and re core roof to accommodate for the new vent pipe?
Answers: Yes
6. Question: Can you please provide lengths, dimensions, and footages of vent pipe, trench drain, and oil pipe?
Answer: Drawings are to scale on the plans.
7. Question: There are decorative cobbles and evergreens on the exterior, do these need to be restored to original condition after proposed work is installed? Do any existing evergreen replacements need to be included in our scope of work for the outside core and connection work?
Answer: The Ground does need to be restored to original condition. No replacement Evergreens are required.
8. Question: Please provide rim and invert elevations for proposed catch basins and lengths for pipes and trench drains.
Answer: The Contractor will have to verify in the field.

9. Question: Please clarify details of trench drain installation i.e. thickness for concrete encasing trench drain, width of concrete slab, removal & replacement for trench drain and vents.
Answer: Install trench drain per manufactures recommendations, match existing concrete floor thickness.
10. Question: Please provide dimension length of trench drain using scale shown on plans. May be different from the actual length
Answer: See attached Manufacturer Specification Sheet.
11. Question: Show dimension, width and length of concrete to be removed & replaced.
Answer: See attached Manufacturer Specification Sheet.
12. Question: Show detail how to connect a new concrete slab to existing concrete
Answer: Dowel on 24" centers.
13. Question: Please provide unit items i.e. Square Foot for concrete removal & replacement
Answer: This is a lump sum bid. Unit costs are not required.
14. Please indicate in Addendum that excavated material has to be tested for non- hazardous waste and to provide unit cost for non-hazardous waste material
Answer: The Contractor will move the spoils to a location just outside the building, inside the yard. The Village will handle the testing and removal of spoils.
15. No wall cutting for vents is involved in this project.

THE BID OPENING DATE HAS BEEN EXTENDED TO SEPTEMBER 28, 2021 AT 11:00 A.M.

SEALED BID/PROPOSAL - ATTN: FINANCE
Bid #: 2021-23 PRF
OPENING DATE: September 28, 2021
OPENING TIME: 11:00 A.M.
DESCRIPTION: PW TRENCH DRAIN REPLACEMENT
DATED MATERIAL- DELIVER IMMEDIATELY

PLEASE CUT OUT AND AFFIX THIS BID LABEL (ABOVE) TO THE OUTERMOST ENVELOPE OF YOUR PROPOSAL TO HELP ENSURE

PROPER DELIVERY TO:

VILLAGE OF GLENDALE HEIGHTS
300 CIVIC CENTER PLAZA
GLENDALE HEIGHTS, IL 60139

LATE BIDS CANNOT BE ACCEPTED!

Please acknowledge receipt of Addendum #1 on Proposal Pricing Page 15 with your submitted bid documents.



Darcie Garza, CPPB
Purchasing Agent
Village of Glendale Heights
900 Civic Center Plaza
Glendale Heights, IL 60139



Z882

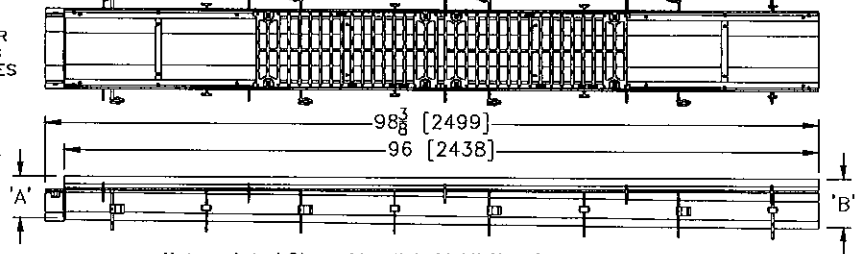
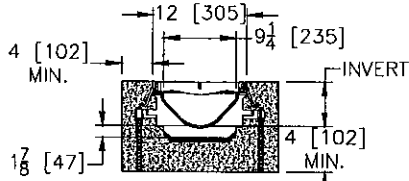
12 [305] WIDE REVEAL TRENCH DRAIN SYSTEM WITH STEEL FRAME

SPECIFICATION SHEET

TAG _____

Dimensional Data (inches and [mm]) are Subject to Manufacturing Tolerances and Change Without Notice

SPECIFYING ENGINEER IS RESPONSIBLE FOR CONCRETE ENCASEMENT AND REINFORCING BASED UPON APPLICATION AND LOCAL CODES



Note: + Actual Channel length is 98 3/8 [2499] to allow for overlap.

ENGINEERING SPECIFICATION: Zurn Z882

Channels shall be 96" [2438mm] long, 12" [305mm] wide reveal and have a 9-1/4" [235mm] throat. Modular channel sections shall be made of 0% water absorbent High Density Polyethylene (HDPE). Shall have a positive mechanical connection between channel sections that will not separate during the installation and shall mechanically lock into the concrete surround every 12" [305mm]. Channels shall weigh less than 5.05 lbs. [2.29kg] per linear foot, have a smooth, 3" [76mm] radiused self cleaning bottom with a Manning's coefficient of 0.009 and 1.04% or neutral 0% built in slope. Channels shall have rebar clips standard to secure trench in its final location. Shall be provided with standard DGC grates that lock down to frame. Zurn 12" [305mm] wide reveal ductile iron slotted grate conforming to ASTM specification A536-84, Grade 80-55-06. Ductile iron grate is rated class C per the DIN EN1433 top load classifications. Supplied in 24" [608mm] nominal lengths with 13/16" [21mm] wide slots, and 1-1/2" [38mm] bearing depth. Grate has an open area of 80.8 sq. in per ft. [171,027 sq. mm per meter]. The 1/4" [6mm] thick heavy-duty carbon steel frame assembly conforms to ASTM specification A36 with 10 - 4" [102mm] long concrete anchors per 96" [2438mm]. Grate lockdown bars are to be integral to the frame. The frame is supplied with a powder coated finish. All welds must be performed by a certified welder per ASTM standard AWS D1.1. Frames Shall be produced in the U.S.A.

PREFIX OPTIONS (Check/specify appropriate options)

- ___ Z Eight-foot High Density Polyethylene (HDPE) Channel, Heavy-Duty Frame with Anchor Studs.*

SUFFIX OPTIONS (Check/specify appropriate options)

Outlet Adapters Add/Each

- ___ -E1 Closed End Cap
- ___ -E4 4 [102] No-Hub End Outlet
- ___ -E6 6 [152] No-Hub End Outlet
- ___ -E8 8 [203] No-Hub End Outlet
- ___ -U4 4 [102] No-Hub Bottom Outlet
- ___ -U6 6 [152] No-Hub Bottom Outlet
- ___ -U8 8 [203] No-Hub Bottom Outlet

Grate Options (Load Classifications are per DIN EN1433)

- ___ -BDC Black Acid Resistant Epoxy Coated Ductile Grate - Class C
- ___ -BDE Black Acid Resistant Epoxy Coated Ductile Grate - Class E
- ___ -BDF Black Acid Resistant Epoxy Coated Ductile Grate - Class F
- ___ -DC Ductile Iron Solid Cover - Class E
- ___ -DGC Ductile Iron Slotted Grate - Class C*
- ___ -DGE Ductile Iron Slotted Grate - Class E
- ___ -DGF Ductile Iron Slotted Grate - Class F
- ___ -GDC Galvanized Ductile Slotted Grate - Class C
- ___ -GDE Galvanized Ductile Slotted Grate - Class E
- ___ -GDF Galvanized Ductile Slotted Grate - Class F
- ___ -GHPD Galvanized Heel-Proof Ductile Grate - Class B
- ___ -GHPDE Galvanized Heel-Proof Ductile Slotted Grate - Class E
- ___ -HPD Heel-Proof Ductile Slotted Grate - Class B
- ___ -HPDE Heel-Proof Ductile Slotted Grate - Class E
- ___ -HPDE Heel-Proof Ductile Slotted Grate - Class E
- ___ -RFGC Reinforced Slotted Galvanized Grate - Class C
- ___ -RPGC Reinforced Perforated Galvanized Grate - Class C
- ___ -RPGRC Reinforced Perforated Galvanized Reverse Punch Grate - Class C

Trench No.	Flow		Flow		
	'A' Shallow Inv.	'B' Deep Inv.	(cfs)	(gpm)	(lps)
8201	6.25 [159]	7.25 [184]	1.241	557	35
8202	7.25 [184]	8.25 [210]	1.725	774	49
8203	8.25 [210]	9.25 [235]	2.226	999	63
8203N	9.25 [235]	9.25 [235]	-	-	-
8204	9.25 [235]	10.25 [260]	2.745	1232	78
8205	10.25 [260]	11.25 [286]	3.271	1468	93
8206	11.25 [286]	12.25 [311]	3.808	1709	108
8206N	12.25 [311]	12.25 [311]	-	-	-
8207	12.25 [311]	13.25 [337]	4.347	1951	123
8208	13.25 [337]	14.25 [362]	4.893	2196	139
8209	14.25 [362]	15.25 [387]	5.443	2443	155
8209N	15.25 [387]	15.25 [387]	-	-	-
8210	15.25 [387]	16.25 [413]	5.996	2691	170
8211	16.25 [413]	17.25 [438]	6.551	2940	186
8212	17.25 [438]	18.25 [464]	7.106	3189	202

- ___ -RFSC Reinforced Slotted Stainless Steel Grate - Class C
- ___ -RPSC Reinforced Perforated Stainless Steel Grate - Class C
- ___ -RPSRC Reinforced Perforated Stainless Steel Reverse Punch Grate - Class C

Miscellaneous Options

- ___ -CBF Black Acid Resistant Coated Top Frame
- ___ -JC Joint Connector
- ___ -SW Sidewall Extensions - 11 [279] High
- ___ -SW2 Double Sidewall Extensions - 22 [559] High
- ___ -VP Vandal-Proof Lockdown

MADE In the U.S.A.

- ___ -ADA-USA Meets Americans with Disabilities Act Requirements - Class C
- ___ -BG Galvanized Steel Bar Grate - Class D
- ___ -DGC-USA Ductile Iron Slotted Grate - Class C
- ___ -DGE-USA Ductile Iron Slotted Grate - Class E
- ___ -FG Fabricated Galvanized Steel Slotted Grate - Class A
- ___ -FS Fabricated Stainless Steel Slotted Grate - Class A
- ___ -GADA-USA Galvanized Ductile ADA Slotted Grate - Class C
- ___ -GDC-USA Galvanized Ductile Slotted Grate - Class C
- ___ -GDE-USA Galvanized Ductile Slotted Grate - Class E
- ___ -GHPDE-USA Galvanized Ductile Slotted Grate - Class E
- ___ -HPDE-USA Heel-Proof Ductile Slotted Grate - Class E

- ___ -GG Fiberglass Grate - Class A
- ___ -PG Perforated Galvanized Steel Grate - Class A
- ___ -PS Perforated Stainless Steel Grate - Class A
- ___ -SBG-L Stainless Steel Bar Grate - Class C

Miscellaneous Options

- ___ -DB Bottom Dome Strainer

* Regularly furnished unless otherwise specified.

Zurn Industries, LLC | Specification Drainage Operation
1801 Pittsburgh Avenue, Erie, PA U.S.A. 16502 · Ph. 855-663-9876, Fax 814-454-7929

In Canada | Zurn Industries Limited
3544 Nashua Drive, Mississauga, Ontario L4V 1L2 · Ph. 905-405-8272, Fax 905-405-1292

www.zurn.com

Rev. G
Date: 12/15/17
C.N. No. 139333
Prod. | Dwg. No. Z882

