



ELECTRONICS RECYCLING AND ASSET MANAGEMENT SERVICES



**CREATIVE RECYCLING**

THE SCIENCE OF REUSE

## **COMPANY OVERVIEW**

- **BEST VALUE** •
- **BEST ENVIRONMENTAL SOLUTION** •



### *COMPANY HISTORY*

Creative Recycling Systems (CRS) has more than 16 years of environmental commitment and investment in the electronics recycling industry, CRS has earned a solid reputation as an industry leader.

From managing in excess of 6,000 pick-ups per year from international corporate customers, to recycling electronics for the federal government through our contract with the General Services Administration (GSA), CRS has made a significant, positive impact on our environment and has defined a multitude of win/win relationships within our industry.

CRS is headquartered in Tampa, FL, with offices in Miami, Tallahassee, Atlanta, GA; Raleigh/Durham, NC; Nashville, TN; Louisville, KY; Allentown, PA and Chicago, IL. Currently CRS is utilizing upwards of 500,000 square feet of operational warehouse space.

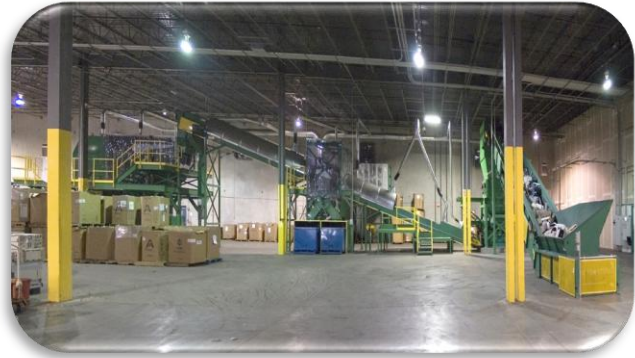
With the proven capability to manage assets, protect / destroy confidential data, process end-of-life electronics, and coordinate nationwide logistics through a company fleet of trucks and by using third party carriers, CRS is raising the bar within the electronics recycling industry. Additionally, CRS employs reuse programs that are the most environmentally-friendly process for managing electronics scrap. The reuse method of electronics recycling results in zero waste and reduces our carbon footprint.

CRS's reputation, commitment to customer service and turn-key customer focused solutions have earned us the business of: The City of Atlanta, Progress Energy, Chick-fil-A, Air Tran Airways, Clean Harbors Environmental Services, Delaware Solid Waste Authority, Northeast Maryland Waste Disposal Authority, Duke University, The City of Nashville, SAS, Web.Com, Red Hat, The US EPA, Toshiba, Samsung and Sharp, to name a few. CRS also handles asset management and recycling for the State of Florida, the Commonwealth of Kentucky and Virginia, the State of South Carolina, the State of North Carolina, and the State of Georgia.

CRS has consistently invested a substantial amount of time and millions of dollars to further develop its innovative process. Due to consistent growth, the company is increasing square footage and adding satellite offices in the Northeast, Great Lakes and Midwest. Since the founding of the company, CRS' professionally trained staff has grown more than tenfold.



### ***State-of-the Art Processing System Returns Highest Value for Commodities***



David I (above left) is the “Goliath” of shredders, located at our corporate office in Tampa, FL. Our second machine, David II (above right), is located at Creative’s Mid-Atlantic Processing Facility in Raleigh Durham, NC. Both processing systems are capable of processing 300 million pounds of electronics per year. David I was highlighted in the January 2008 issue of National Geographic Magazine, in the article, “High Tech Trash.” <http://ngm.nationalgeographic.com/2008/01/high-tech-trash/carroll-text/1>.

### ***State-of-the-Art Cathode-Ray-Tube Processing Technology***



*Robert F. Kennedy Jr. and CRS President & CEO, Jon Yob discuss the importance of CRT recycling. Mr. Kennedy delivered the key note address at the CRS North Carolina Grand Opening.*

The CRT Processing System is a laser-guided cutting system integrated with the world’s first glass cleaning technology, operating under negative pressure and producing furnace ready glass cullet. Utilizing state-of-the-art air filtration, this equipment exceeds the requirements of both the EPA and OSHA by producing virtually no emissions. The System separates the leaded and unleaded portions of the tube, making it possible to re-use the glass panel portion, producing a saleable glass cullet. The second step of this integrated system removes any coating from the funnel glass, also producing a furnace ready cullet. With the end of analog transmissions, this



technology is a timely solution for the tsunami of obsolete CRT televisions that will eventually enter the waste stream if not properly recycled.

### **CERTIFICATIONS AND HIGHLIGHTS**

**R2 CERTIFICATION –  
EPA RESPONSIBLE ELECTRONICS RECYCLER**



**RIOS CERTIFICATION –  
ISRI RECYCLING INDUSTRY OPERATING STANDARD**



**ISO 14001 –  
ENVIRONMENTAL MANAGEMENT  
SYSTEM**



**ISO 9001 –  
QUALITY MANAGEMENT  
SYSTEM**



**OSHAS 18001 –  
OCCUPATIONAL HEALTH & SAFETY  
MANAGEMENT SYSTEM**



CERTIFIED BY SGS - WWW.US.SGS.COM

- CRS is recommended and next in line for E-Stewards Recyclers Initiative.
- Through innovation and due diligence, CRS is successfully *changing the traditional mindset* of “e-waste” to a new perspective of “e-worth”, worldwide.
- **Asset Management** – CRS specializes in handling surplus, obsolete, or end-of-life electronic equipment.
- **Customer Service** is our #1 priority. We will do what it takes to earn and keep your business.
- When **National Geographic** Magazine researched the global problem of e-waste, they featured CRS as a quality solution in their captivating article “High-tech Trash” in the January 2008 issue.

<http://ngm.nationalgeographic.com/2008/01/high-tech-trash/carroll-text>

- CRS’s commitment to being a **good corporate citizen** begins with its leadership role as a steward of the environment. It is reinforced through support of community endeavors that benefit schools, churches, non-profit organizations, and the individuals they serve.
- **Logistics Services** – Comprehensive transportation services utilizing our own fleet or working with one of our preferred third party carriers. **We cover the nation!**



## ***CRS HIGHLIGHTS***

- 2010 Small Business Leader of the Year, Tampa Chamber
- 2010 International Electronics Recycler of the Year
- 2010 Earth Charter US Sustainable Business Award
- 2009 Eye on America Documentary on Creative Recycling Systems
- 2009 Keynote Speaker on Electronics Recycling in Shanghai – World Recycling Forum
- 2009 Green Marketing Program of the Year / eCycling Collection – Triangle Business Journal
- 2009 Discovery Channel Documentary on CRS and the role the Company plays in eCycling
- 2008 Highlighted in National Geographic Magazine (January Issue)
- 2008 Jon Yob is honored as IT Florida, IT Leader of the Year
- 2007 Featured on the CBS Evening News with Katie Couric
- 2007 CEO Jon Yob named Ernst & Young Entrepreneur of the Year® - FL Technology Division
- 2007 Greater Brandon Chamber of Commerce honored as Small Business of the Year
- 2006 Tampa Bay Technology Forum's Quantum Leap Technology Award
- 2006 IT Florida Honored with the Excellence in IT Leadership – Central Division
- 2004 Mass Mutual National Family Business of the Year Award
- 2003 Florida Family Business of the Year by the College of Business at the University of Tampa
- 2002 Greater Tampa Chamber of Commerce Small Business of the Year Award
- 2002 Commendation for Environmental Contributions by the University of South Florida's Department of Environmental Science and Policy

***CRS has a NO LANDFILL POLLUTING company policy for all electronics.***

With CRS, all end-of-life electronics are recycled into valuable commodities, which are circulated back into worldwide production... ***SIMPLY ERADICATING ELECTRONIC WASTE*** –  
**A true victory for the environment** by keeping our landfills (here and abroad)  
free of hazardous electronic equipment.

**THE MCGRAW-HILL RECYCLING HANDBOOK**

By Herbert F. Lund

**Joseph C. Yob, Vice President of Creative Recycling Systems authored Chapter 10 "Electronic Devices" in the McGraw-Hill Recycling Handbook by Herbert F. Lund.**

In 2007, Creative Recycling Systems was contracted by the Florida Department of State to handle the removal, de-manufacturing, processing and re-marketing of Florida's **29,000** obsolete touch screen voting systems.



### ***HIGHEST DATA SECURITY STANDARDS***

A critical element of your business or organization remains the information in which you use for day to day operations. CRS has developed programs that ensure data is sanitized and assets recovered. The process begins with accepting full ownership of e-scrap at the time of pickup. Sanitization begins with removing asset tags and obliterating property markings. We adhere to the **National Institute of Standards and Technology (NIST)** guidelines for media sanitization, providing our customers with the most advanced data security methods for their needs.

CRS provides a menu of data security services including:

- Detailed labeling/tracking of loads from pick-up throughout entire recycling process.
- Mobile, ON-SITE wiping or destruction.
- Removing the asset and customer identification tags from each item.
- Performing sanitization, or overwrites, on each item to purge the data.
- Degaussing all hard drives, floppy disks, magnetic tape, and other IT media.
- Video monitoring of drives and other IT media during the shredding process.
- Data destruction on Optical Media.
- Certificates of Destruction and/or Media Sanitization.

Our offices and warehouses are monitored 24 hours a day, seven days a week by a professional security agency using an extensive system of surveillance cameras. There are active-intrusion detection systems on all buildings. Our in-house environmental health and safety team ensures compliance with all local, state and federal regulations. We also regularly employ outside consultants to guarantee that we uphold the highest standards.

We control access to secure areas in which sensitive hardware can be held under extra protection while the material is assessed and the data is destroyed. A strict triage and inventory control process allows us to track our customer's assets from the time of pick up through their eventual final disposition. Every company requires a unique solution for asset recovery, and CRS provides the consulting and support services necessary to provide that solution in the most secure manner possible.

**How to prevent IT assets from becoming IT liabilities: Why you need a plan to manage your IT assets through their life cycle.**

ABA Banking Journal Oct, 2003 by Joseph C. Yob, Vice President of Creative Recycling Systems, Inc.



<http://www.crserecycling.com/main.php?p=whitePaper>



### **ACCEPTABLE EQUIPMENT**

All electronic equipment is acceptable with the exception of manifested hazardous waste, radioactive waste, biohazardous waste or mercury containing devices\*\*.

*Some examples of accepted electronic equipment are, but not limited to:*

Computer Monitors – CRTs	Tape Players	Printed Circuit Boards
Computer Monitors – Flat Panel	CD Players	UPS (personal & network)
Televisions – CRTs	Telephones	Microwaves
Televisions – Flat Screen	Cell Phones	Small Household Appliances
Desktop Computers	Fax Machines	Servers
Laptop Computers	Gaming Consoles	Terminals
Keyboards/Mice	Power & Network Cables	Rechargeable Batteries
Toner/Ink Cartridges	Network Hubs	Peripherals
Printers	Switching boxes	Military Equipment
Scanners / Fax Machines	Controllers	Medical Equipment
Copy Machines	Modems	Telecommunications
VCRs	Docking Stations	Commercial Equipment
Stereos	CD Roms	Office Equipment
Radios	Hard Drives	Banking Equipment
Mainframes	Household Batteries	Test Equipment

### **UNACCEPTABLE EQUIPMENT**

Devices containing or omitting radioactivity	Car batteries
Mercury containing devices**	Smoke alarms
Light bulbs (Fluorescent or Incandescent)	Thermostats
Large Household Appliances (White Goods)	Thermometers
Hazardous materials	Air conditioners
Fire extinguishers	Gas powered engines

**\*\*Examples of mercury containing devices are:** Fluorescent light bulbs, HID bulbs, Thermostats, Boat Switches, and Thermometers

**Creative Recycling – The Science of Reuse**

[www.crserecycling.com](http://www.crserecycling.com)



## STATE CONTRACT EXPERIENCE

CRS is currently the contract holder for eight state contracts in seven states:

### State of Florida

Charles Day, CPPB, Purchasing Analyst  
**Department of Management Services, Division of State Purchasing**  
4050 Esplanade Way, Suite 360  
Tallahassee, FL 32399-0950  
Fax: (850) 414-6122  
Email: [Charles.Day@dms.myflorida.com](mailto:Charles.Day@dms.myflorida.com)  
**2005 to present**

### State of Georgia

Matthew Carter, III, CPPB, Purchasing Agent  
**Department of Administrative Services**  
State Purchasing Division  
200 Piedmont Ave., Suite 1820 West Tower  
Atlanta, GA 30334  
Email: [matthew.carter@doas.ga.gov](mailto:matthew.carter@doas.ga.gov)  
**2010 to present**

### State of Kentucky

Tom Heil, Environmental Scientist II  
**Recycling Assistance Section**  
**Division of Waste Management**  
14 Reilly Road  
Frankfort, KY 40601  
502-564-6716 x 4640  
[Thomas.heil@ky.gov](mailto:Thomas.heil@ky.gov)  
**2010 to present**

### Commonwealth of Virginia

Director, DGS Procurement  
**Department of General Services**  
**Procurement Services Unit**  
1100 Bank Street, Suite 724  
Richmond, VA 23219-3639  
804-371-0932  
Email: [procurement@dgs.virginia.gov](mailto:procurement@dgs.virginia.gov)  
**2008 to present**

### State of North Carolina – State Convenience Contract (926A)

Dewey Bennett, CPPB  
**Division of Purchase & Contract**  
**Department of Administration**  
4<sup>th</sup> Floor  
116 West Jones St.  
Raleigh, NC 27603-8002  
919-807-4530  
[dewey.bennett@doa.nc.gov](mailto:dewey.bennett@doa.nc.gov)  
**2008 to present**

### State of North Carolina – State Surplus Property Contract

Stan Black, Contract Administrator  
**State Surplus Property Agency**  
**Department of Administration**  
6501 Chapel Hill Rd.  
Raleigh, NC 27607  
919-854-2168  
[Stanley.Black@doa.nc.gov](mailto:Stanley.Black@doa.nc.gov)  
**2008 to present**

### State of South Carolina – State Electronics Recycling Contract

Ron Conner, Contract Administrator  
**Information Technology Management Office**  
1201 Main Street, Suite 400  
Columbia, SC 29201  
803-896-0284  
[rconner@itmo.sc.gov](mailto:rconner@itmo.sc.gov)  
**2009 to present**

### State of Louisiana – State Electronics Recycling Contract

Rob Haynes, State Purchasing Officer III  
**Division of Administration - Office of State Purchasing**  
1201 N. Third St., Suite 2-160  
Baton Rouge, LA 70804-9095  
225-342-8010  
[rob.haynes@la.gov](mailto:rob.haynes@la.gov)  
**2010 to present**



### ***LOCAL GOVERNMENT EXPERIENCE***

With regard to local and county government agencies, CRS has developed numerous electronics recycling partnerships. CRS has worked with many diverse counties throughout the United States including local governments, recycling centers, solid waste facilities, and school boards.

Pinellas County, FL  
Fulton County, GA  
Louisville Metro, KY  
DuPage County, IL  
Prince William County, VA  
Leon County, FL  
Charlotte/Mecklenburg, NC  
Lancaster County, PA

City of Atlanta, GA  
Nashville/Davidson, TN  
Morris County, NJ  
City of Birmingham, AL  
Charleston County, SC  
City of New York, NY  
Baltimore County Schools, MD  
Montgomery County, MD

CRS has held in excess of **700 COLLECTIONS** throughout the Southeast United States, partnering with companies such as Dell, Home Depot, Sam's Club, Fox Television, Panasonic, Sharp, Toshiba, Southwire, and Toyota.



### ***BUSINESS-TO-BUSINESS EXPERIENCE***

CRS has extensive experience recycling end-of-life electronics for government, state, county, small businesses, large businesses and non-profits. Our services include, but are not limited to; transporting, removing hazardous substances, securing data, de-manufacturing, and processing electronic equipment in compliance with all laws and regulations. CRS has an impressive customer base within the private sector and excels at recycling large and small volumes of electronic equipment for communications companies, insurance companies, utilities and other businesses.

Progress Energy  
Chick-fil-A  
Sharp  
Southwire

SAS  
VF Corporation  
Toshiba  
Delta Airlines

Pilgrim's Pride  
Duke Energy  
Clean Harbors ES  
Red Hat

